

# CoB News, 2 July 2008

## KLC Gets the Big "T"

USMNEWS.NET reporters have confirmed that the Mississippi IHL voted to award tenure to the CoB's Kuo Lane Chen. The insert below comes from the minutes of the IHL's May 2008 meeting.

### PERSONNEL REPORT

#### AWARD OF TENURE

University of Southern Mississippi

Annulis, Heather

Arnau, Randolph

Carlson, Philip

Carr, Robin

Chen, Kuo Lane

Drane, Dan

Elasri, Mohamed

Griffith, Jerry

Kyle, Maryann

Lowe, Andrew

Moak, Elizabeth

Morgan, Sarah

Murali, Beddhu

Qualls, Carl

Rackoff, Louis

Shelley, Kyna

Sulbaran, Tulio

Winstead, Christopher

Zhang, Chaoyang

Chen's tenure-track ride in USM's CoB has been anything but usual, and it ends after seven years instead of six. If sources are correct, she owes a tremendous debt to interim CoB dean, Alvin Williams, and Chang-Tseh Hsieh, the *McCarty Distinguished Professor of MIS*.



Kuo Lane Chen



Alvin Williams



Chang-Tseh Hsieh

These two championed the KLC cause, and were arguably the tipping point(s) in the positive decision handed down by USM President, Martha Saunders. Chen's next big hurdle is the promotion to full professor. With [Williams' exit](#) to the University of South Alabama, and Hsieh's expected retirement from USM in the coming years, Chen may have to make a run for it alone. Sources indicate that this could be a problem for Chen, given that her biggest [problem](#) -- an [inability](#) to [communicate](#) with students -- will likely remain.

## It Was Only a Matter of Time

Sources tell USMNEWS.NET that EFIB economist, Farhang Niroomand, has finally "cashed in" on the editorial position of long-time friend, UW-Milwaukee economist Mohsen Bahmani-Oskooee.

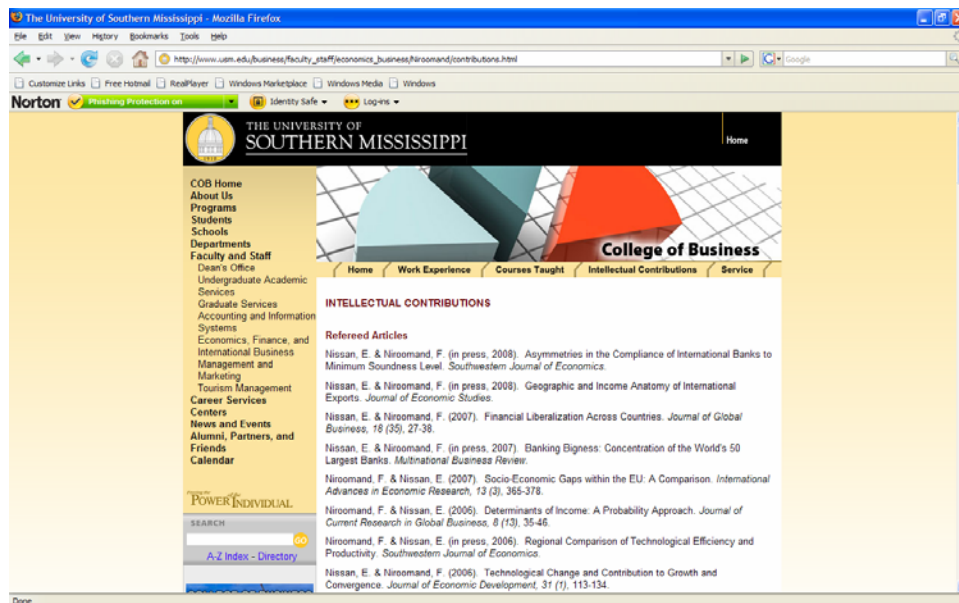


Farhang Niroomand

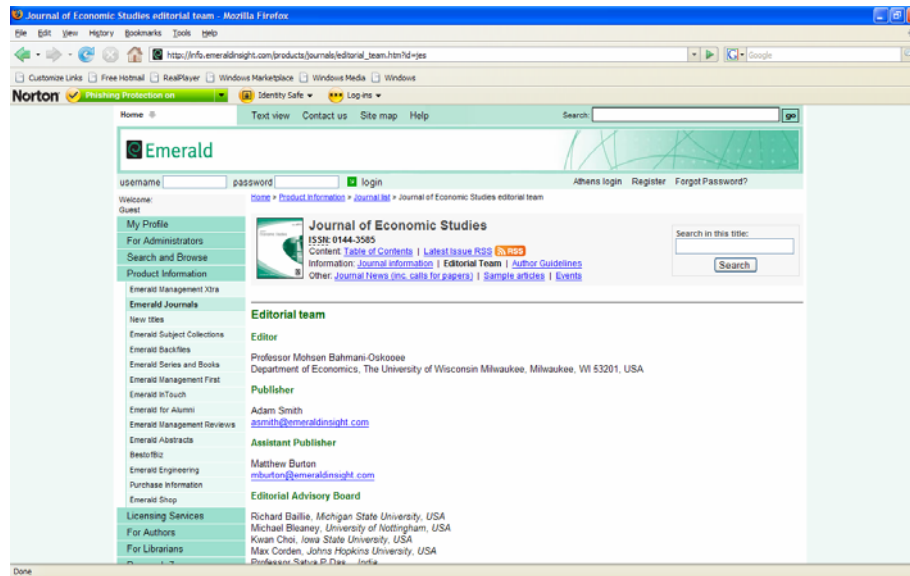


Mohsen Bahmani-Oskooee

The recent release of CoB vitae shows that Niroomand and another EFIB economist, Edward Nissan, have an article forthcoming in the *Journal of Economic Studies*. A screen of Niroomand's web page at USM shows Niroomand's "in press" article at the *JES* (see below).



The next screen shows Bahmani-Oskooee's position with the *JES*:



Bahmani-Oskooee has provided one favor after another to Niroomand over the years. One of the more notorious episodes involving Bahmani-Oskooee came during the 2001 Louis K. Brandt Research Award race. That story, [told](#) at least [twice](#) here at USMNEWS.NET, began when then-associate dean Niroomand solicited Bahmani-Oskooee to "referee" the submissions in the CoB's 2001 LKBRA contest. Not surprisingly, Bahmani-Oskooee selected Niroomand's friend and co-author, Nissan. Now, seven years later, Bahmani-Oskooee is publishing (in his *JES*) joint work by Niroomand and Nissan. (Actually, the joint work that Bahmani-Oskooee's *JES* will be publishing is by "**Nissan and Niroomand.**" As sources point out, **Niroomand** appears to have been caught up in **Nissan's** [slipstream](#).)

Niroomand has tried to provide a favor or two to Bahmani-Oskooee. During the EFIB's 2007-08 search for new economics faculty, Bahmani-Oskooee's daughter, Sahar Bahmani, was [chosen](#) as a finalist for one of the positions. Some argue, however, that Akbar Marvasti's search committee had little trouble supporting [the idea](#) of Bahmani's candidacy, with or without a connection to Niroomand.



Sahar Bahmani



Akbar Marvasti

Sources state that the discovery of Niroomand's recurring trips to "the Bahmani-Oskooee well" does not appear to affect Niroomand at all. He (Niroomand) seems to look to Milwaukee any time he needs a boost of some sort. That is yet another reason why life in USM's CoB is never boring.